

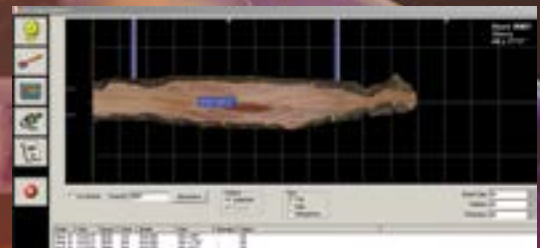
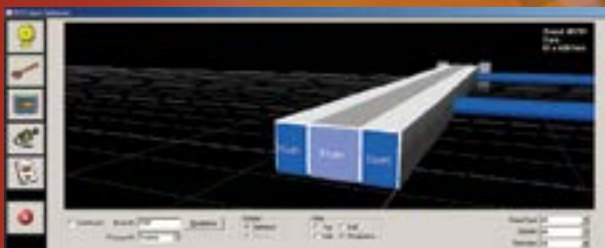
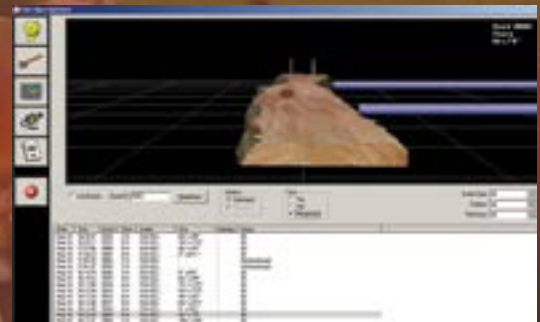
IRIS™

TRUE SHAPE 3D OR 2D EDGER Optimizer



FEATURES

- High profile wane up/wane down scanning
- Transverse, lineal or dual infeed options
- Scan flitches, roundbacks or Cants
- PLC Controlled Networks
- Windows XP / 7 User friendly operating system
- Extensive Reports on SQL Database
- AE EdgerView live saw virtual operator interface for grade override options
- Total local design and support
- Suitable for Softwood & Hardwood Mills



MAIN OFFICE
4 Portside Drive Mt Maunganui 3116, New Zealand
Ph: +64 7 574 6223
Email: sales@automationelec.com
Website: www.automationelec.com

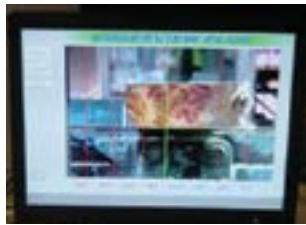


USA OFFICE: 406 Frazier Road, Ruston, LA, 71270
P.O. Box 13182, Ruston, LA, 71273
Ph: +1 318 243 5974 or +1 318 548 7852
EMAIL: jeff@automationelecusa.com
Website: www.automationelecusa.com



Operating System

- Rack mounted Industrial Microsoft Windows XP / 7 Computer
cw 2 GB RAM or better including Backup Computer
- High Capacity hard drive
- SQL Server
- Remote support via Internet Broadband or PC Anywhere
- Scanner Interface to ScanMeg, JoeScan or LMI Dynavision Hermary or Smart Camera for 3D or 2D profiles (Appropriate Scanner selected for application)
- Hi resolution point density
- Connect to Millwide Network or SCADA System
- Wane up or Wane down depending on infeed design



Optional Edgerview or Pithview virtual operator

Configurable Software

- Adjustable Wane rules and zones
- Multi board optimisation
- Value or volume priority solutions
- Metric or imperial optimisation
- Rescan or manual override options
- Comprehensive Reports on SQL Database
- Volume, Shift, Production, Downtime, Alarms, Chip limit controls
- Skewing or centering infeed
- Board Historian archive of real images and solutions available for simulation
- Optional Virtual "EdgerView or PithView" operator interface

Networks

- Interface to Allen Bradley, Siemens or other via Ethernet
- Delta, ControlLogix HYD or SLC QS Module multi axis synchronized closed loop positioning
- Fast Set and retract speeds
- Infinite skewing or offsetting
- Ergonomically designed Operator control & LCD Interface



Trueshape Cant and roundback Scanner



User friendly operator interface and console



Reliable PLC Controlled Networks